

# MONTHLY MEMBERSHIP PROGRESS REPORT

LOCATION ZIMBABWE

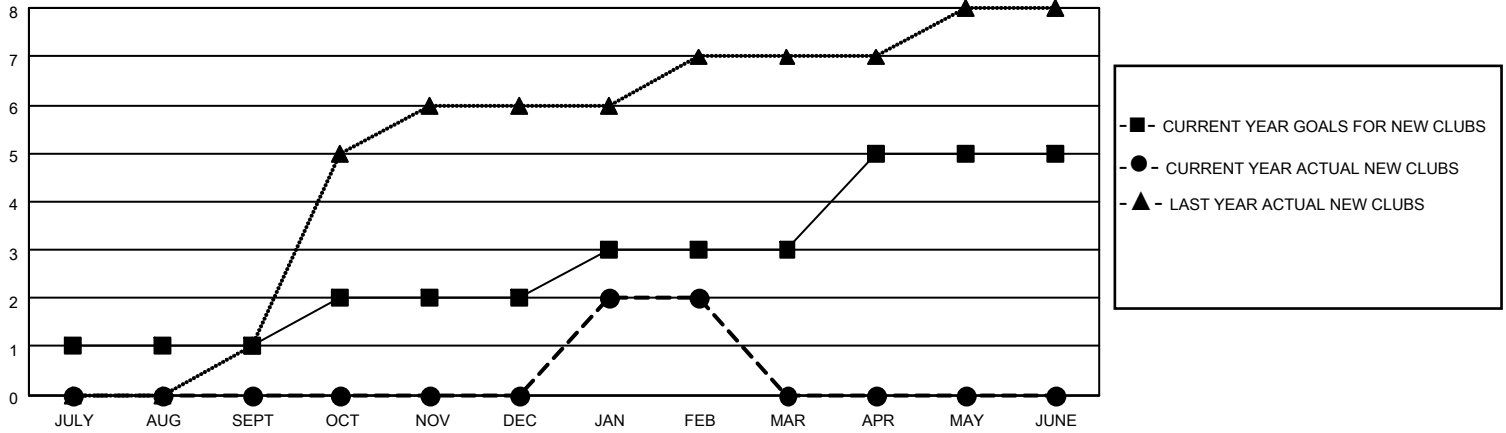
District 412 A

Results as of: 2/28/2023

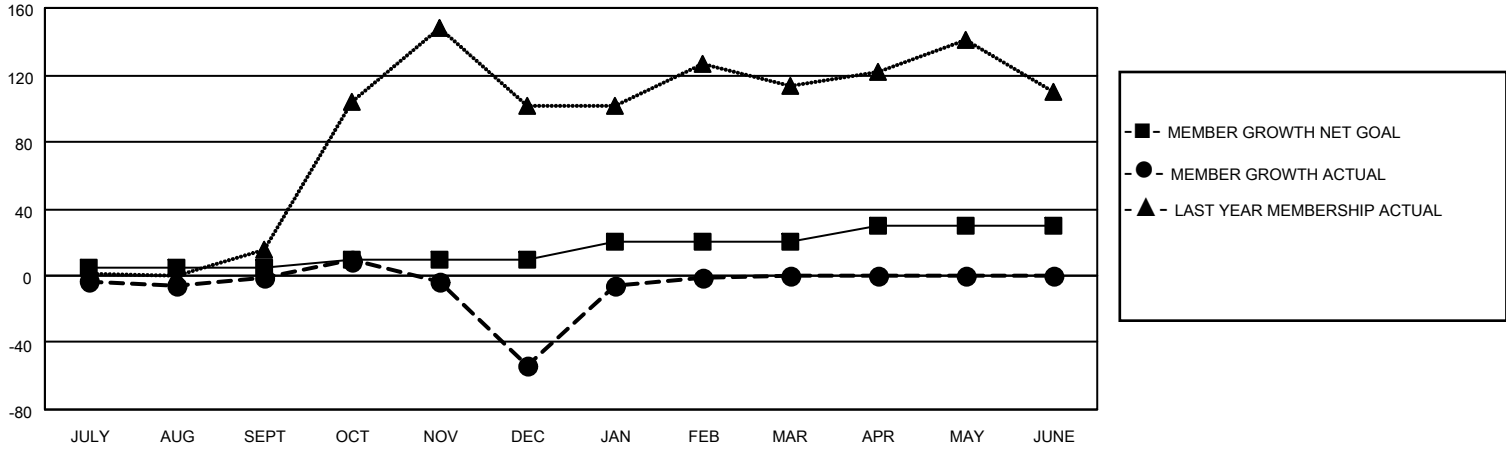
Clubs			
RESULTS FOR 2022-2023			
QUARTER	NEW CLUB GOAL	NEW CLUBS	DROPPED CLUBS
JULY/AUG/SEPT	1	0	0
OCT/NOV/DEC	1	0	0
JAN/FEB/MAR	1	2	0
APR/MAY/JUNE	2	0	0

Members			
RESULTS FOR 2022-2023			
QUARTER	MEMBER GROWTH NET GOAL	MEMBER GROWTH ACTUAL	DROPPED MEMBERS ACTUAL (including transfers)
JULY/AUG/SEPT	5	22	17
OCT/NOV/DEC	5	17	69
JAN/FEB/MAR	10	70	11
APR/MAY/JUNE	10	0	0

**GOALS AND ACTUAL NEW CLUBS CUMULATIVE**



**GOALS AND ACTUAL MEMBERS CUMULATIVE**



**DROPPED CLUBS: 0**

**24 CLUBS OF 59 ADDED 1 OR MORE NEW MEMBERS**

**GENDER DISTRIBUTION**

MALE	499 (46.29%)
FEMALE	579 (53.71%)
NON BINARY	0 (0.00%)
PREFER NOT TO ANSWER	0 (0.00%)

**DROPPED MEMBERS**

[CLICK HERE FOR CUMULATIVE MEMBERSHIP DATA](#)

DECEASED	6
CLUB CANCELLED	0
OTHER	91
<b>TOTAL</b>	<b>97</b>

TOTAL FAMILY UNIT MEMBERS	330
FAMILY MEMBERS PAYING HALF DUES	192